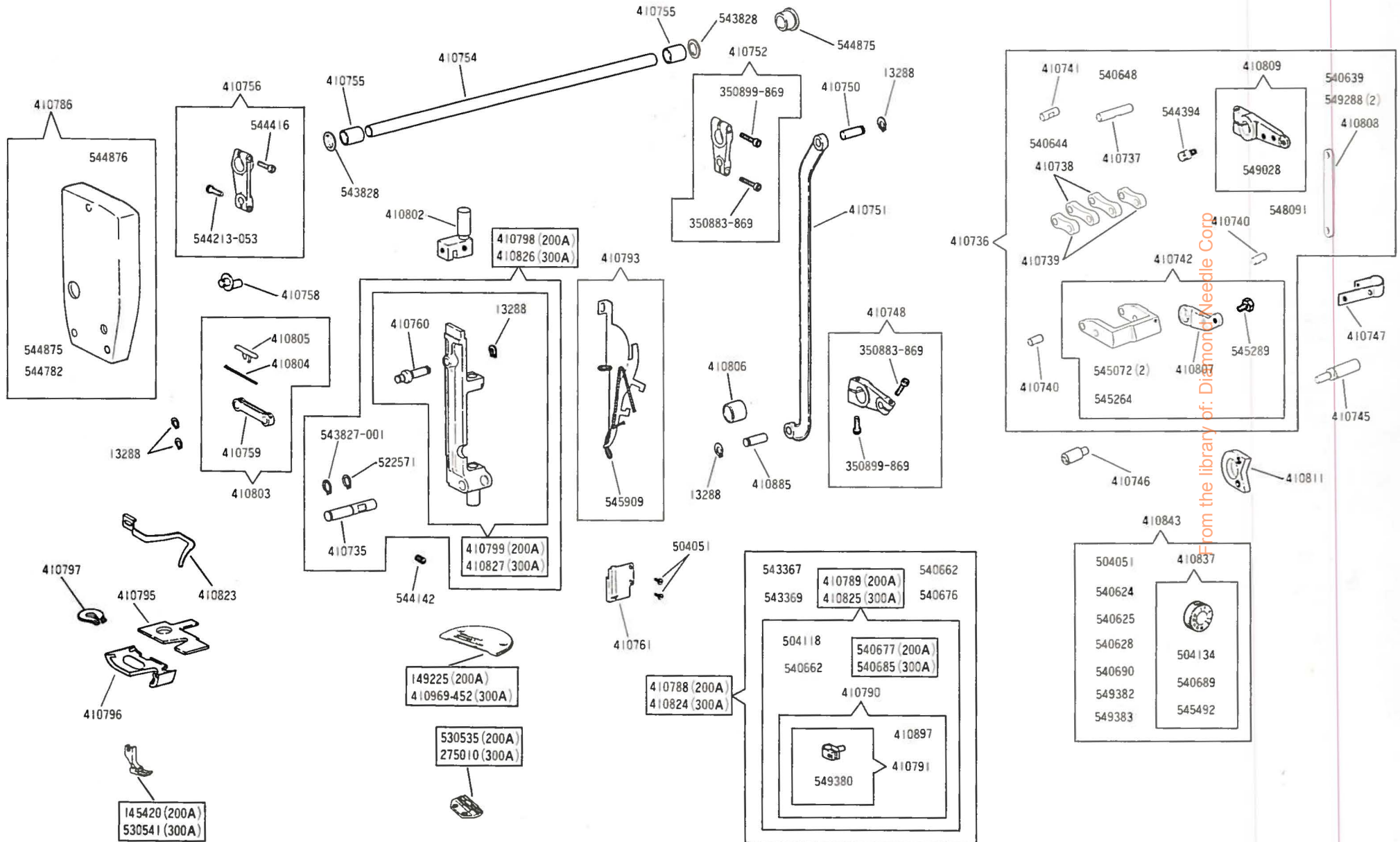


SINGER*

PARTS FOR 591C200A/300A MACHINES WHICH DIFFER FROM 591D200A/300A MACHINES

Form U3203 (481)
Part No. 543218-002



**NUMERICAL LIST OF PARTS FOR 591C200A/300A MACHINES
WHICH DIFFER FROM 591D200A/300A MACHINES**

PART NO.	DESCRIPTION	PART NO.	DESCRIPTION
13288	Needle Bar Frame Connecting Link Retaining Ring (2)	410791	Needle Bar Connecting Stud with 549380
13288	Needle Bar Frame Connecting Rod Pin Retaining Ring (2)	410793	Thread Take-up Lever Oil Guard with 540721 and 545909
13288	Needle Bar Frame Stud Retaining Ring	410795	Needle Bar Frame Oil Retainer Pad
145420	Presser Foot (spring hinged) complete (for 200A)	410796	Needle Bar Frame Oil Retainer
149225	Throat Plate (for 200A)	410797	Needle Bar Frame Oil Retainer Retaining Ring
275010	Feed Dog (15 teeth to the inch) (for 300A)	410798	Needle Bar Frame complete, Nos. 410735, 410799, 522571 and 543827-001 (for 200A)
350883-869	Needle Bar Frame Connecting Rod Pin Clamping Screw (2)	410799	Needle Bar Frame with 13288 and 410760 (for 200A)
350899-869	Needle Bar Frame Connecting Rod Drive Crank Screw	410802	Needle Bar Frame Stabilizer
350899-869	Needle Bar Frame Rocker Shaft Crank (right side) Screw	410803	Needle Bar Frame Connecting Link 410759 with 410804 and 410805
410735	Needle Bar Frame Pivot Stud	410804	Needle Bar Frame Connecting Link Wick
410736	Feed Rock Shaft Driving Frame complete, Nos. 410737, 410741, 410742, 410808, 410809, 540639, 540644, 540648, 544394, 548091, two each 410738, 410739, 410740 and 549288	410805	Needle Bar Frame Connecting Link Wick Retainer
410737	Feed Rock Shaft Crank Connecting Rod Pin	410806	Feed Rock Shaft Bushing (intermediate)
410738	Feed Rock Shaft Driving Link (large) (2)	410807	Feed Rock Shaft Driving Frame Extension Arm
410739	Feed Rock Shaft Driving Link (small) (2)	410808	Feed Reverse Lever Hinge Stud Crank Connecting Link
410740	Feed Rock Shaft Driving Link (small) Pin (2)	410809	Feed Reverse Lever Hinge Stud Crank with 549028
410741	Feed Rock Shaft Crank Pin	410811	Feed Regulating Plate
410742	Feed Rock Shaft Driving Frame with 410807, 545264, 545289 and two 545072	410823	Slack Thread Regulator
410745	Feed Rock Shaft Driving Frame Hinge Pin (back)	410824	Thread Take-up complete, Nos. 410825, 540662, 540676, 543367 and 543369 (for 300A)
410746	Feed Rock Shaft Driving Frame Hing Pin (front)	410825	Thread Take-up Crank 540685 with 410790, 504118 and 540662 (for 300A)
410747	Feed Reverse Lever Spring Retainer	410826	Needle Bar Frame complete, Nos. 410735, 410827, 522571 and 543827-001 (for 300A)
410748	Needle Bar Frame Connecting Rod Driving Crank with 350883-869 and 350899-869	410827	Needle Bar Frame with 13288 and 410760 (for 300A)
410750	Needle Bar Frame Connecting Rod Pin (upper)	410837	Feed Regulating Dial with 504134, 540689 and 545492
410751	Needle Bar Frame Connecting Rod	410843	Feed Reverse Lever complete, Nos. 410837, 504051, 540624, 540625, 540628, 540690, 549382 and 549383
410752	Needle Bar Frame Rocker Shaft Crank (right side) with 350883-869 and 350899-869	410885	Needle Bar Frame Connecting Rod Pin (lower)
410754	Needle Bar Frame Rocker Shaft	410897	Needle Bar Connecting Link
410755	Needle Bar Frame Rocker Shaft Bushing (2)	410969-452	Throat Plate (for 300A)
410756	Needle Bar Frame Rocker Shaft Crank (left side) with 544213-053 and 544416	504051	Thread Shield Screw (2)
410758	Needle Bar Frame Eccentric Stud	522571	Needle Bar Frame Pivot Stud Retaining Ring (back)
410759	Needle Bar Frame Connecting Link	530535	Feed Dog (22 teeth to the inch) (for 200A)
410760	Needle Bar Frame Stud	530541	Presser Foot (spring hinged) complete (for 300A)
410761	Thread Shield	543827-001	Needle Bar Frame Pivot Stud Retaining Ring (front)
410786	Face Plate with 544782, 544875 and 544876	543828	Needle Bar Frame Rocker Shaft Thrust Bearing (2)
410788	Thread Take-up complete, Nos. 410789, 540662, 540676, 543367 and 543369 (for 200A)	544142	Needle Bar Frame Pivot Stud Set Screw
410789	Thread Take-up Crank 540677 with 410790, 504118 and 540662 (for 200A)	544213-053	Needle Bar Frame Eccentric Stud Clamping Screw
410790	Needle Bar Connecting Link 410897 with 410791	544394	Feed Reverse Lever Spring Screw
		544416	Needle Bar Frame Rocker Shaft Crank (left side) Screw
		544875	Arm Hole Plug (back)
		545289	Feed Rock Shaft Driving Frame Extension Arm Screw

From the Brand of Diamond Needle Corp